



ABCB7 Polyclonal Antibody

Catalog No	YP-Ab-00652
Isotype	IgG
Reactivity	Human;Rat;Mouse;
Applications	WB;IHC;IF;ELISA
Gene Name	ABCB7
Protein Name	ATP-binding cassette sub-family B member 7 mitochondrial
Immunogen	The antiserum was produced against synthesized peptide derived from human ABCB7. AA range:691-740
Specificity	ABCB7 Polyclonal Antibody detects endogenous levels of ABCB7 protein.
Formulation	Liquid in PBS containing 50% glycerol, 0.5% BSA and 0.02% sodium azide.
Source	Polyclonal, Rabbit,IgG
Purification	The antibody was affinity-purified from rabbit antiserum by affinity-chromatography using epitope-specific immunogen.
Dilution	WB: 1/500 - 1/2000. IHC: 1/100 - 1/300. ELISA: 1/40000.. IF 1:50-200
Concentration	1 mg/ml
Purity	≥90%
Storage Stability	-20°C/1 year
Synonyms	ABCB7; ABC7; ATP-binding cassette sub-family B member 7; mitochondrial; ATP-binding cassette transporter 7; ABC transporter 7 protein
Observed Band	Human:83kD,Mouse/Rat 100kD
Cell Pathway	Mitochondrion inner membrane ; Multi-pass membrane protein .
Tissue Specificity	Human esophagus tumor,Muscle,Placenta,Umbilical cord blood,
Function	disease:Defects in ABCB7 are the cause of X-linked sideroblastic anemia with ataxia (ASAT) [MIM:301310]. ASAT is a recessive disorder characterized by an infantile to early childhood onset of nonprogressive cerebellar ataxia and mild anemia with hypochromia and microcytosis.,function:Could be involved in the transport of heme from the mitochondria to the cytosol. Plays a central role in the maturation of cytosolic iron-sulfur (Fe/S) cluster-containing proteins.,similarity:Belongs to the ABC transporter family. Heavy Metal importer (TC 3.A.1.210) subfamily.,similarity:Contains 1 ABC transmembrane type-1 domain.,similarity:Contains 1 ABC transporter domain.,subunit:Homodimer or heterodimer .,
Background	The membrane-associated protein encoded by this gene is a member of the superfamily of ATP-binding cassette (ABC) transporters. ABC proteins transport various molecules across extra- and intra-cellular membranes. ABC genes are divided into seven distinct subfamilies (ABC1, MDR/TAP, MRP, ALD, OABP,



GCN20, White). This protein is a member of the MDR/TAP subfamily. Members of the MDR/TAP subfamily are involved in multidrug resistance as well as antigen presentation. This gene encodes a half-transporter involved in the transport of heme from the mitochondria to the cytosol. With iron/sulfur cluster precursors as its substrates, this protein may play a role in metal homeostasis. Mutations in this gene have been associated with mitochondrial iron accumulation and isodicentric (X)(q13) and sideroblastic anemia. Alternatively spliced transcript variants encoding multiple isoforms hav

matters needing attention

Avoid repeated freezing and thawing!

Usage suggestions

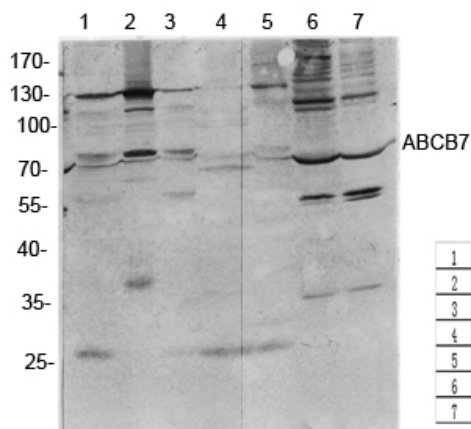
This product can be used in immunological reaction related experiments. For more information, please consult technical personnel.



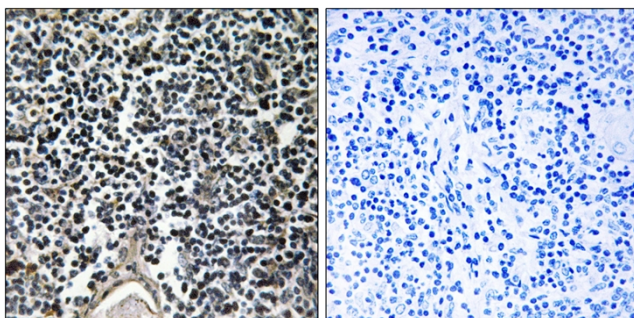
Products Images



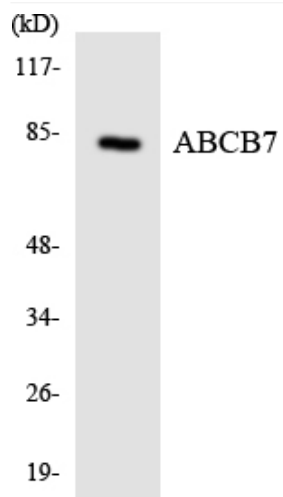
Western Blot analysis of various cells using ABCB7 Polyclonal Antibody diluted at 1:1000



Western Blot analysis of various cells using antibody diluted at 1:1000. Secondary antibody(catalog#:RS0002) was diluted at 1:20000



Immunohistochemistry analysis of paraffin-embedded human thymus gland, using ABCB7 Antibody. The picture on the right is blocked with the synthesized peptide.



Western blot analysis of the lysates from HUVECcells using ABCB7 antibody.